

ROYAL-VILLAS-EUROPE

from where you are . . .
to wherever you want to be

Italy



Sorrento Peninsula

Ref ISS57



This comfortable 7 bedroom holiday home is situated in a panoramic spot of Massa Lubrense, about 10 kilometres from Sorrento, on a stretch of the Sorrento peninsula that offers its guests an incredible view out onto the enchanting Island of Capri.

The villa is reached by walking down a short, private alleyway, about 50 meters in length, which leads guests through the traditional front garden area of the property. The property is surrounded by a delightful rustic garden, crossed by decorative vine pergolas and greenery, with the Island of Capri in the background.

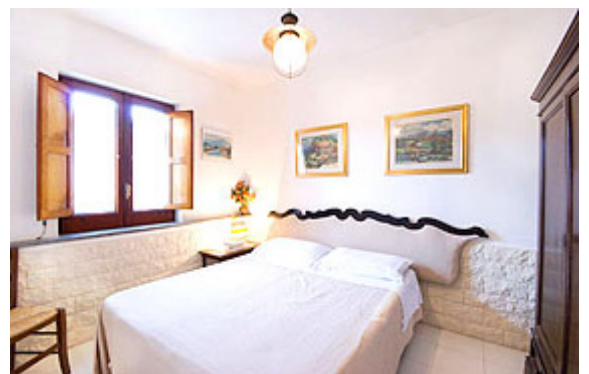
This is a two-story property with the ground floor consisting of an open plan, large living-room with ceramic tile floors, two sofas, a wooden coffee table, and a dining area with direct access out onto the external terraces. There is a second living room area with a TV, sofa, a fireplace, and built-in benches. The ceramic tile kitchen has a 5 range stovetop, double sink, microwave oven, dishwasher, and a large freezer. The kitchen also leads directly out to the garden, which accesses the various terrace areas. The double bedroom with wooden wardrobe and bathroom with shower completes the ground floor.

On the first floor are a double bedroom with dresser and a set of French doors leading out onto a terrace with a separate bathroom with shower, a twin bedroom with wardrobe, a triple bedroom with three single beds, a large wardrobe, and a dresser, and a fourth, single bedroom. There is also a second bathroom with bathtub.

The studio annex/guest house lies in the garden and consists of a large living room with French bed, a small kitchen with dining area, and direct access out onto the panoramic terrace. There is also a small, single bedroom and a bathroom with shower.

The dependence is reached down a path of 13 steps. The ground floor consists of a patio veranda enclosed in glass with a view over the garden. There are two bedrooms, a double bedroom with a ceiling fan and a small twin bedroom with bunk beds and a bathroom with shower.

There is a small garden area where the 4 x 5 metre swimming pool with hydro massage is located. The pool area has a sun umbrella and chaise-lounge chairs and sits in the area among the flowers and other typical Mediterranean plants. The area also offers a wooden patio with table and chairs for dining outside.



No. Of Bedrooms :	No. of Bathrooms :	Nearest Airport :	Nearest Town :	Nearest Beach :
Sleeps 15	5	10km from Sorrento	Naples 1hr	Marina del Cantone 5km