

Greek Islands

Paros, Agia Irini

Ref GLI116

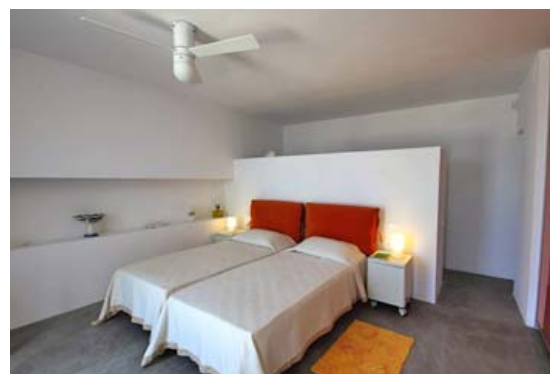
- 6 BEDROOMS
- 6 BATHROOMS
- PRIVATE SWIMMING POOL
- BEAUTIFUL VIEWS
- 600M FROM AGIA IRINI BEACH



This is a large contemporary 6 bedroom waterfront property, divided into two units and overhanging the sea like a white sailing vessel, with a spectacular view on the blue shades of the Aegean sea, the northern side of Antiparos and the breathtaking sunset that is not to be missed at aperitif time. The garden, mostly Mediterranean landscape, is typical to the island with its wild bushes goes down to the rocky edge of the sapphire water.

This modern minimal design property features a waterfront swimming pool surrounded by a wooden deck and outdoor living area on different level terraces suitable for ones privacy. Each house has a similar layout and equivalent style with a modern ambience with a kitchen with modern appliance open to a large bright comfortable living area furnished with colorful contemporary pieces, a large dining table with design chairs of varied colour, which open, through a large sliding door onto a small protected internal courtyard.

The master bedroom and a guest bedroom both en-suite, are located in each main unit, while two separate guest studios with small private terraces are situated below the swimming pool. This villa is an innovative way to modernize the traditional Cycladic white cubic architecture, an experience for a group of friends or large family who wish to combine tradition and modernity while being conveniently located to the romantic beach of Agia Irini.



Main House I:

- 6 guests
- 1 Master Bedroom with double bed, A/C & en-suite bathroom
- 1 Guest Bedroom with double bed, A/C & en-suite bathroom
- 1 Guest Studio with double bed, A/C, en-suite bathroom and small living room

Main House II:

- 6 guests
- 1 Master Bedroom with double bed, A/C & en-suite bathroom
- 1 Guest Bedroom with double bed, A/C & en-suite bathroom
- 1 Guest Studio with double bed, A/C, en-suite bathroom and small living room